



LINGYU 凌宇

—COMPRESSED AIR SYSTEM—

ZHONGSHAN LINGYU MACHINERY CO., LTD.



Main Product:

- Air cooled/water cooled /energy-saving refrigerated dryer
- Heatless regeneration / heated regeneration / modular adsorption dryer
- Zero loss/micro air consumption adsorption dryer
- PSA nitrogen generator
- Filter and accessories



Corporate mission:

To provide professional, comprehensive and competitive complete solutions and services for industrial gas separation and purification



Corporate vision:

To be a leading enterprise in the industry and create a world-renowned brand



Corporate development philosophy:

Technology-supported value-driven



Marketing strategy:

To win the market with high-quality products and professional service

HRB-E SERIES

LOW GAS CONSUMPTION TYPE BLOWER HEATED ADSORPTION AIR

DRYER ■ Design Features

Communication interfaces support RS-485 (standard) and IoT connectivity to meet diverse user requirements.

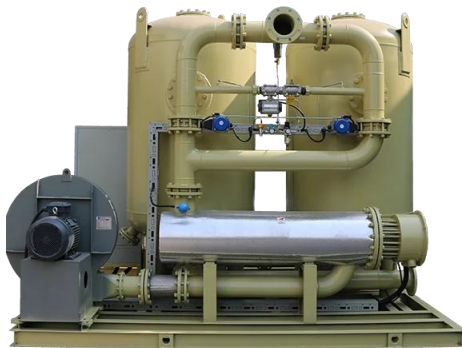
A self-developed EBZ200-2 multi-core drive is adopted; compared with fixed-cycle control modes, it reduces overall energy consumption by more than 10%.

Optional dew point energy-saving control extends adsorption time under fluctuating load conditions, reducing total energy consumption by over 30%.

Customized high-performance adsorbents are used, with a 20% filling margin for enhanced reliability and service life.

Branded high-pressure blowers and high-performance pneumatic valves are combined with high-efficiency coolers designed using HTFS software, ensuring reliable performance and long service life. 304 stainless steel control air piping and specially designed flow distributors provide high adsorbent utilization and low pressure drop.

A 7-inch Siemens touchscreen programmable controller enables dynamic monitoring of operating processes. Collected signals include air outlet temperature, heater temperature, regeneration exhaust temperature, A/B tower pressure, blower pressure, and pressure dew point (optional).



■ Operating Conditions & Technical Requirements

Applicable Fluids: Compressed air, non-corrosive air
Rated Inlet Pressure: 0.7 MPa (0.6–1.0 MPa, other levels customizable)
Rated Inlet Temperature: 10–30°C (max 40°C)
Inlet Air Dew Point: ≤25°C
Regeneration Gas Consumption: 2–3%
Outlet Pressure Dew Point: -20°C / -40°C optional
Rated Ambient Temperature: 35°C (usable 2–40°C)

■ Technical Parameters

ZERO TYPE SHEET				
Model	Capacity (m³/min)	Gas Connection Pipe	Power (kW)	Dimensions (mm)
HRB-E100	13.5	DN50	7.5	1390*970*2297
HRB-E120	17	DN65	10.2	1750*1050*2271

HRB-E150	21.5	DN80	11.8	1750*1050*2471
HRB-E180	25	DN80	14.2	1800*1050*2597
HRB-E200	28.5	DN80	16.8	1900*1100*2454
HRB-E250	32	DN80	18.4	1920*1260*2600
HRB-E300	37	DN100	21.5	2175*1340*2750
HRB-E350	41.5	DN100	25.9	2200*1350*2752
HRB-E400	45	DN100	27.5	2400*1500*2852
HRB-E450	50	DN100	30	2540*1670*2938
HRB-E500	55	DN125	31.5	2650*1700*3138
HRB-E550	60	DN125	33.5	2700*1840*3150
HRB-E600	65	DN125	36.3	2750*1840*2888
HRB-E700	75	DN125	41.1	2750*1840*2888
HRB-E800	85	DN125	47.8	3100*1900*3050
HRB-E900	95	DN150	52.6	3250*2100*2950
HRB-E1000	110	DN150	59	3250*2100*2950
HRB-E1200	120	DN150	63.8	3500*2200*3341
HRB-E1400	140	Dn200	74.1	3700*2400*3420
HRB-E1600	160	DN200	89	3900*2420*3500
HRB-E1800	180	DN200	98.5	4100*2200*3050
HRB-E2100	210	DN200	110.5	4200*2835*3150
HRB-E2600	260	DN250	136.4	5200*2500*3300

Note: For air volumes above **260 m³/min** or special specifications (materials, temperature, or pressure), please contact our company or authorized dealers. Data is for reference only and may change without prior notice.



HRB-Z SERIES

ZERO GAS CONSUMPTION TYPE BLOWER HEATED ADSORPTION AIR

DRYER ■ Design Features

Communication interfaces support RS-485 (standard) and IoT connectivity to meet diverse user requirements.

A self-developed EBZ200-2 multi-core drive is adopted; compared with fixed-cycle control modes, it reduces overall energy consumption by more than 10%.

Optional dew point energy-saving control extends adsorption time under fluctuating load conditions, reducing total energy consumption by over 30%.

Customized high-performance adsorbents are used, with a 20% filling margin for enhanced reliability and service life.

Branded high-pressure blowers and high-performance pneumatic valves are combined with high-efficiency coolers designed using HTFS software, ensuring reliable performance and long service life.

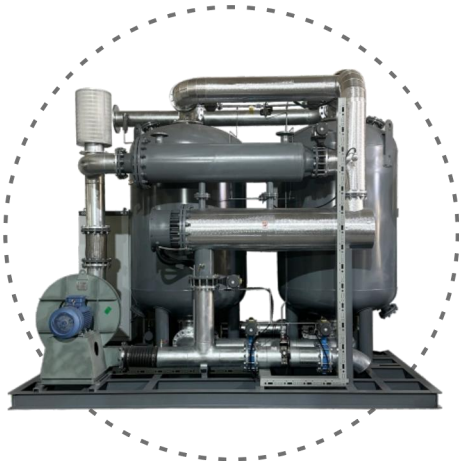


304 stainless steel control air piping and specially designed flow distributors provide high adsorbent utilization and low pressure drop.

A 7-inch Siemens touchscreen programmable controller enables dynamic monitoring of operating processes. Collected signals include air outlet temperature, heater temperature, regeneration exhaust temperature, A/B tower pressure, blower pressure, and pressure dew point (optional).

Operating Conditions & Technical Requirements

Applicable Fluids: Compressed air, non-corrosive air
Rated Inlet Pressure: 0.7 MPa (0.6–1.0 MPa, customizable)
Rated Inlet Temperature: 10–30°C (max ≤40°C)
Inlet Air Dew Point: ≤25°C
Regeneration Gas Consumption: 0%
Outlet Pressure Dew Point: -20°C / -40°C optional
Rated Ambient Temperature: 35°C (usable 2–40°C)
Cooling Water Temperature: ≤32°C
Cooling Water Pressure: 0.2–0.6 MPa



Technical Parameters

ZERO TYPE SHEET

Model	Capacity (m³/min)	Gas Connection Pipe	Power (kW)	Dimensions (mm)
HRB-Z100	13.5	DN50	7.5	1390*970*2297
HRB-Z120	17	DN65	10.2	1750*1050*2271
HRB-Z150	21.5	DN80	11.8	1750*1050*2471
HRB-Z180	25	DN80	14.2	1800*1050*2597
HRB-Z200	28.5	DN80	16.8	1900*1100*2454
HRB-Z250	32	DN80	18.4	1920*1260*2600
HRB-Z300	37	DN100	21.5	2175*1340*2750
HRB-Z350	41.5	DN100	25.9	2200*1350*2752
HRB-Z400	45	DN100	27.5	2400*1500*2852
HRB-Z450	50	DN100	30	2540*1670*2938
HRB-Z500	55	DN125	31.5	2650*1700*3138
HRB-Z550	60	DN125	33.5	2700*1840*3150
HRB-Z600	65	DN125	36.3	2750*1840*2888
HRB-Z700	75	DN125	41.1	2750*1840*2888
HRB-Z800	85	DN125	47.8	3100*1900*3050
HRB-Z900	95	DN150	52.6	3250*2100*2950
HRB-Z1000	110	DN150	59	3250*2100*2950
HRB-Z1200	120	DN150	63.8	3500*2200*3341
HRB-Z1400	140	Dn200	74.1	3700*2400*3420
HRB-Z1600	160	DN200	89	3900*2420*3500
HRB-Z1800	180	DN200	98.5	4100*2200*3050
HRB-Z2100	210	DN200	110.5	4200*2835*3150
HRB-Z2600	260	DN250	136.4	5200*2500*3300

Note: For air volumes above **260 m³/min** or special specifications (materials, temperature, or pressure), please contact our company or authorized dealers. Data is for reference only and may change without prior notice.

OUR SERVICES

■ LINGYU Services



**Professional
efficient**



**Strive to improve
customer satisfaction**



**National coverage
fast response**

LINGYU

■ Service Content

- **Provide free after-sales consultation;**
- Debug, repair, and maintenance of Lingyu equipment during the warranty period;
- Survey the site of other brands outside the warranty period of Lingyu and formulate plans.

■ Complete Accessories

○ **Refrigerated air dryer**

Fans, compressors, condensers, evaporators, dry filters, expansion valves, bypass valves, pressure gauges, various drains, etc.

○ **Adsorption air Dryers**




Valves, electrical boxes, adsorbents, diffusers, silencers, solenoid valves, check valves, etc.

○ **Other accessories**

Various filter elements, differential pressure gauges, etc.



CONTACT US

-  Address: No.3, 2nd Street, Yuanle Road, DongshengTown, Zhongshan City, Guangdong Province, China
-  E-mail: lingyudryer@gmail.com
-  Website: www.lingyuair.com/